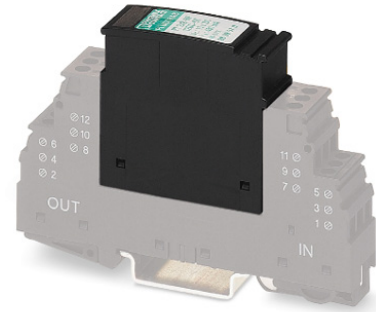


# PT 2X2-HF-12 DC-ST

Order No.: 2839570



Surge protection plug for the base element, normal mode voltage  
coarse and fine protection for two floating double wires in IT. Design:  
12 V DC



Commercial data	
EAN	4017918591113
Pack	10 pcs.
Customs tariff	85363010
Weight/Piece	0.02587 KG
Catalog page information	Page 77 (TT-2007)

**Product notes**

WEEE/RoHS-compliant since:  
07/10/2006

**Technical data****General**

Housing material	PA
Inflammability class acc. to UL 94	V0
Color	black

Standards for air and creepage distances	DIN VDE 0110-1
	IEC 60664-1: 1992-10
Total surge current (8/20) $\mu$ s	20 kA
Ambient temperature (operation)	-40 °C ... 85 °C
Mounting type	On base element
Design	DIN rail module, two-section, divisible
Number of positions	5
Degree of protection	IP20
Direction of action	Line-Line & Line-Signal Ground/Shield & optional Signal Ground/ Shield-Earth Ground
Arrester can be tested with CHECKMASTER from software version:	From SW rev. 1.00
Width	17.70 mm
Height	52.00 mm
Length	45.00 mm
Pitch unit	1 Div.
<b>Protective circuit</b>	
IEC category	C1
	C2
	C3
	D1
VDE requirement class	C1
	C2
	C3
	D1
Nominal voltage $U_N$	12 V DC
Max. operating voltage $U_{max}$	13 V DC
Arrester rated voltage $U_c$	13 V DC
	9 V AC
Arrester rated voltage $U_c$ (Core-Core)	13 V DC
	9 V AC
Arrester rated voltage $U_c$ (Core-Earth)	13 V DC (with PT 2x2-BE)
Nominal current $I_N$	450 mA (45°C)
Operating effective current $I_c$ at $U_c$	$\leq 5 \mu$ A
Discharge current to PE at $U_c$	$\leq 4 \mu$ A (with PT 2x2-BE)
	$\leq 1 \mu$ A (with PT 2x2+F-BE)

Nominal discharge surge current $I_n$ (8/20) $\mu\text{s}$ (Core-Core)	10 kA
Nominal discharge surge current $I_n$ (8/20) $\mu\text{s}$ (Core-Earth)	10 kA
Total surge current (8/20) $\mu\text{s}$	20 kA
Max. discharge surge current $I_{\text{max}}$ (8/20) $\mu\text{s}$ maximum (Core-Core)	10 kA
Max. discharge surge current $I_{\text{max}}$ (8/20) $\mu\text{s}$ maximum (Core-Earth)	10 kA
Nominal pulse current $I_{\text{an}}$ (10/1000) $\mu\text{s}$ (Core-Core)	67 A
Lightning test current (10/350) $\mu\text{s}$ , peak value $I_{\text{imp}}$	2.5 kA
Output voltage limitation at 1 kV/ $\mu\text{s}$ (Core-Core) spike	$\leq 50$ V
Output voltage limitation at 1 kV/ $\mu\text{s}$ (Core-Earth) spike	$\leq 450$ V
	$\leq 1$ kV (with PT 2x2+F-BE)
Output voltage limitation at 1 kV/ $\mu\text{s}$ (Core-Core) static	$\leq 25$ V
Output voltage limitation at 1 kV/ $\mu\text{s}$ (Core-Earth) static	$\leq 450$ V
Output voltage limitation at 1 kV/ $\mu\text{s}$ (Core-GND) static	$\leq 450$ V
Residual voltage at $I_n$ , (conductor-conductor)	$\leq 25$ V
Residual voltage with $I_{\text{an}}$ (10/1000) $\mu\text{s}$ (conductor-conductor)	$\leq 23$ V
Protection level $U_p$ (Core-Core)	$\leq 100$ V (C2 (10 kV/5 kA))
Protection level $U_p$ (Core-Earth)	$\leq 450$ V (C2 (10 kV/5 kA))
Response time $t_A$ (Core-Core)	$\leq 500$ ns
Response time $t_A$ (Core-Earth)	$\leq 500$ ns
Input attenuation aE, sym.	0.2 dB ( $\leq 5$ MHz)
Cut-off frequency $f_g$ (3 dB), sym. in 100 Ohm system	Typ. 70 MHz
Capacity (Core-Core)	Typ. 30 pF
Resistance in series	2.2 $\Omega$
Max. required back-up fuse	500 mA (e.g. T in acc. with IEC 127-2/III)
Surge carrying capacity in acc. with IEC 61643-21 (Core-Core)	C2 (10 kV/5 kA)
Surge carrying capacity in acc. with IEC 61643-21 (Core-Earth)	C2 (10 kV/5 kA)
	D1 (2.5 kA)

**Connection data**

Type of connection	Screw connection (in connection with the base element)
Connection type IN	PLUGTRAB plug-in system
Connection type OUT	PLUGTRAB plug-in system
Conductor cross section stranded min.	0.2 mm <sup>2</sup>
Conductor cross section stranded max.	2.5 mm <sup>2</sup>
Conductor cross section solid min.	0.2 mm <sup>2</sup>
Conductor cross section solid max.	4 mm <sup>2</sup>
Conductor cross section AWG/kcmil min.	24
Conductor cross section AWG/kcmil max	12

**Connection, protective circuit**

Standards/regulations	IEC 61643-1
-----------------------	-------------

**Certificates / Approvals**

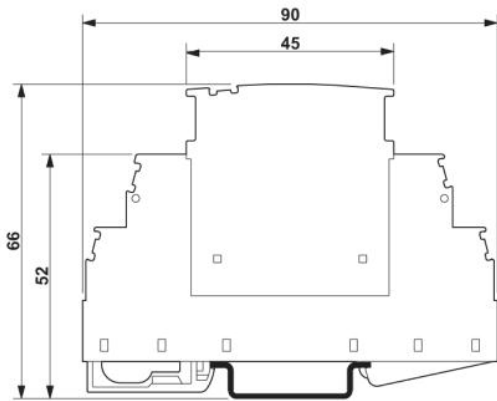
Certification GOST, UL Listed

Certification Ex: CUL-EX LIS, UL-EX LIS

**Accessories**

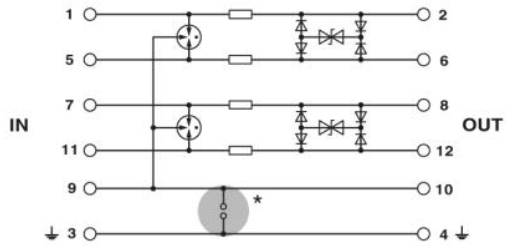
Item	Designation	Description
<b>Marking</b>		
0811228	X-PEN 0,35	Marker pen without ink cartridge, for manual labeling of markers, labeling extremely wipe-proof, line thickness 0.35 mm
0811228	X-PEN 0,35	Marker pen without ink cartridge, for manual labeling of markers, labeling extremely wipe-proof, line thickness 0.35 mm
0811228	X-PEN 0,35	Marker pen without ink cartridge, for manual labeling of markers, labeling extremely wipe-proof, line thickness 0.35 mm
0814717	ZBF 15:SO/CMS	Zack strip, flat, 10-section, divisible, special printing, marking according to customer requirements
0808671	ZBF 5,LGS:FORTL.ZAHLEN	Zack strip, flat, printed horizontally: 10-section, with the numbers, 1-10, 11-20 etc. up to 991-1000, color: White
0810821	ZBF 5,LGS:GERADE ZAHLEN	Zack marker strip, flat, printed horizontally: 10-section, with even numbers, printed with the numbers: 2-20, 22-40, etc. up to 82-100

Dimensioned drawing



The figure shows the complete module consisting of a base element and connector

Circuit diagram



Approval logo (Ex area)

---

